

Our Model of Care & Why

At Red Logan Dental Clinic, we know that preventive care is essential for long-term oral health. By offering cost-free preventive and restorative services, we remove financial barriers that may prevent someone from getting the care they need. This allows us to address issues early, stopping them from becoming more serious and expensive. Our approach goes beyond immediate relief to focus on long-term health and education. By offering a holistic, patient-centered model, we create a strong foundation for lasting well-being, ensuring everyone has the opportunity to achieve and maintain optimal oral health.

“Making a difference. This is the essence of the Red Logan Dental Clinic. During my time at the clinic, I truly got a feel for how devoted Dr. Bradley and the team are to helping the underserved population of White River Junction and the surrounding area. While unfortunate, it is a fact that the cost of dental treatment is one of the largest deterrents keeping people from maintaining routine dental care. Being able to work with patients, knowing that the care I was providing was not going to impart on them a financial burden, was a truly fulfilling experience. It was a pleasure working with Dr. Bradley and the team, and I am confident that the clinic will continue doing as it has always done, making a difference.”



Max Watson, Tufts Dental Extern

Restoring Vision, Renewing Independence - Why Your Support Matters!



Each of our patients come with their own unique stories and struggles. One story that stands out is of a patient who faced severe vision impairment, which impacted every aspect of their life. As their eyesight deteriorated over time, what began as a minor inconvenience became a major obstacle. Simple tasks that once seemed effortless became nearly impossible, loss of employment, the ability to drive, and personal care were no longer manageable. Managing finances, once their responsibility, now fell entirely on their spouse's shoulders. The emotional and physical toll on both partners was significant, straining their relationship and the patient's sense of independence, leading to a deep depression. The situation worsened further due to a lack of health insurance and financial resources.

That's when Good Neighbor Health Clinic stepped in. Our team quickly assessed the seriousness of the patient's condition, providing essential primary care and referring them to our ophthalmology clinic for a thorough evaluation. Recognizing the urgency, we coordinated a referral to Dartmouth Health, where they received corrective surgery. The results were life altering. For the first time in years, the patient could see clearly again. Their restored independence was more than just improved vision - it was about regaining control over their life and rebuilding their confidence. The relief and joy were evident, easing the burden on their spouse and improving their relationship.

This story is just one of the many we've had the privilege to be a part of this year, it highlights the unique and life-changing impact of access to free, quality healthcare. Each patient's journey underscores the life-changing difference your support can make, helping transform and save lives.

Board of Directors

Todd Allen, Board Chair
White River Junction, VT

Barbara Farnsworth, MS, Vice Board Chair
White River Junction, VT

Tonya Gammell, Board Treasurer
Norwich, VT

Patricia Monahan, Board Secretary
Norwich, VT

Brooke Herndon
Lebanon, NH

Rick Adams
White River Junction, VT

Laura Beidler
White River Junction, VT

Toby Kravitz, DDS
Hartford, VT

Charlie Kimbell
Woodstock, VT

Jeremy Eggleton
Etna, NH

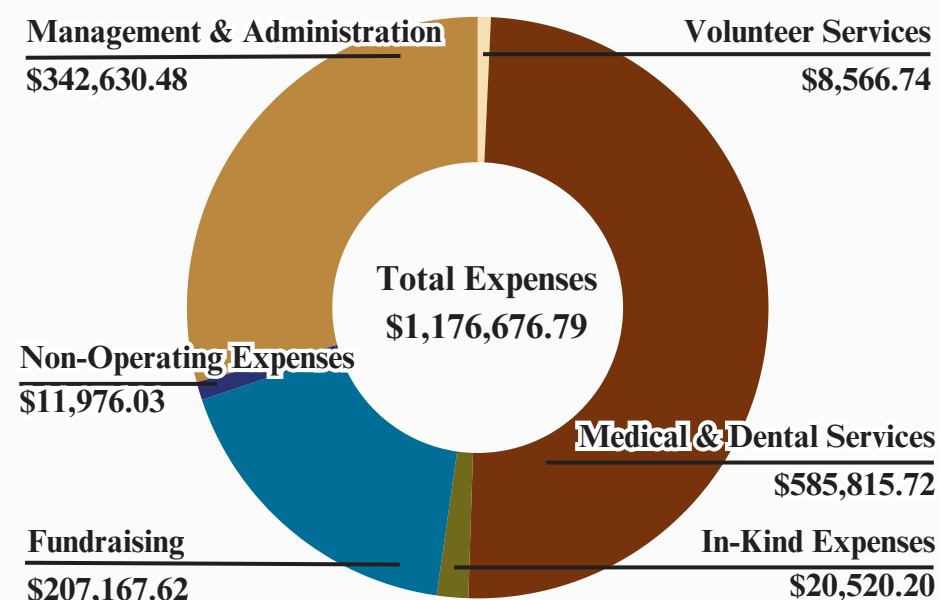
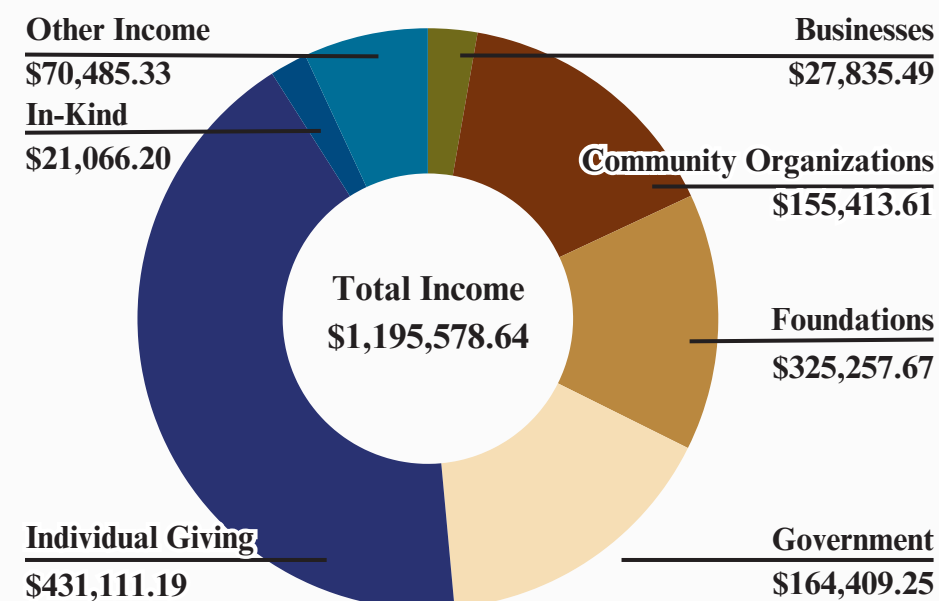
Craig Cohen, DMD
Grantham, NH

Kyle Seibert
Lebanon, NH

William Cioffredi, PT
Lebanon, NH

David Nierenberg, MD
Grantham, NH

Fiscal Year 2024 Finances



For further information, to give a gift by phone, or make a gift of stock, contact Elizabeth Austin, Executive Director, at (802)295-1868 or elizabeth@goodnhc.org



Good Neighbor Health Clinic
Red Logan Dental Clinic

2024 Annual Impact Report


Dear Friends,

As we reflect on the past year at Good Neighbor Health Clinic, we are inspired by the progress we have made and the changes experienced by those we serve. Our clinic remains a vital source of hope, reconciliation, and equity in a challenging healthcare landscape. This year, we have seen the incredible impact of your dedication. Thanks to your generosity, we have provided essential dental and medical care to 800 patients, including 221 new patients, through a total of 2,908 visits and 4,331 interactions.

Your support has empowered our volunteers and strengthened our services, allowing us to reach more individuals and form valuable partnerships for better outcomes. Medical, dental, and nursing students are crucial to the future of healthcare. Your involvement helps shape their understanding of care and access, fostering long-term improvements in the field. Your contributions have made a profound difference—creating new smiles, restoring vision, expanding mental health services, and providing necessary medications. The true measure of your impact is not just in numbers but in the lives changed and the health improved.

On behalf of Good Neighbor Health Clinic, the Board of Directors, and all those we serve, thank you for your unwavering commitment to making health possible for our community.

Thank you!


Elizabeth Austin, MHA
Executive Director


Todd Allen
Board Chair



YOUR IMPACT THIS YEAR

Good Neighbor Health Clinics is a non-profit free health care facility established in 1992. We provide free medical and dental care to uninsured and underinsured adult residents (18 and over) of the Upper Valley, living within 30 miles of our clinic in White River Junction who are in need of basic care but don't have the means to pay for it.



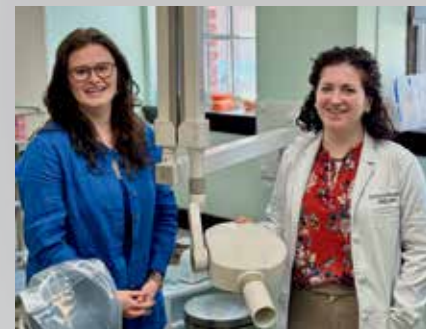
YOU EXPANDED HEALTH ACCESS

This year, your support enabled us to provide **1,427 medical appointments** to **413 unique patients**. Thanks to you, **166 new patients** received essential care for the very first time, broadening their access to vital health services.



YOU RESTORED YOUR NEIGHBORS' SMILES

Because of your generous contributions, we completed **428 hygiene appointments**, crafted **44 dentures**, and created **15 partials** for those in need. We also welcomed **55 new patients** and conducted a total of **1,481 dental appointments**.



YOU SHAPED THE FUTURE CARE

Your support made a significant impact this year. Dental hygiene students dedicated **48 hours** to delivering crucial care, while dental externs contributed **1,144 hours** to serve our patients. Additionally, **34 medical students** gained hands-on experience working alongside providers in both primary and specialty care appointments.



YOU FUELED OUR MISSION WITH YOUR TIME

Your incredible commitment powered our efforts this year, with volunteers contributing a total of **1,889 hours** across medical, dental, and community services. Each hour you invested was a vital thread in the fabric of our mission, helping us deliver exceptional care and support to those in need.

Watch our youtube video to learn more about our services and your impact here!
www.youtube.com/watch?v=7YSDH70jbXI

**You Made A
Difference In
Our Neighbors'
Health!**

85% of dental patients delayed care prior to being seen at Red Logan Dental Clinic

76% of medical patients delayed care prior to being seen at Good Neighbor Health Clinic

71% of our patients had no health or dental insurance prior to being seen at Good Neighbor Health Clinic or Red Logan Dental Clinic

4,331 total patient interactions this fiscal year

254 referrals for complex medical care at outside health entities

298 referrals to other social service agencies to assist with meeting patient needs

Your donation supports the Good Neighbor Health Clinic and Red Logan Dental Clinic in providing crucial care to those who need it most. Help us continue offering compassionate, life-changing services by donating today at:

<https://goodneighborhealthclinic.org/donate>



Executive Director, Elizabeth Austin, during the introduction of emergency shelf-stable food bags for patients

Dental hygiene students from NHTI completed hygiene appointments with Red Logan Dental patients



Volunteers attended community events to raise awareness about the services we provide



Our staff participated in team building exercises and trainings to better connect the clinics

CURRENT NEEDS:

Toothbrushes
 Mouthwash
 Floss
 Clean, Gently Worn Clothes
 Canned Meats
 Canned Beans
 Canned Fruit
 Peanut Butter

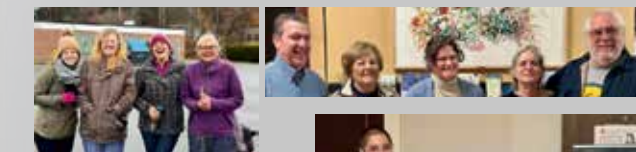
THANKS TO YOU, WE'VE BEEN ABLE TO GROW!

Thanks to your incredible support, our services have grown well beyond the walls of our clinic this past year. Your generosity has empowered us to advance our mission of not only providing essential medical and dental care but also addressing the broader determinants of health that impact our patients' well-being.



We hosted vital vaccination clinics at key community locations, ensuring that people across the Upper Valley were protected from COVID-19 and the flu. These clinics played a crucial role in keeping our community safe and healthy.

We've begun tackling food insecurity head-on. Our new system allows us to offer emergency food supplies during clinic visits, so those in urgent need receive support in the interim of connecting with long-term food resources.



The support from our dedicated community partners, including both individual contributors and organizations, has been absolutely crucial in helping us achieve our goals this year. Your generous contributions have provided us with essential resources and increased visibility, which have been vital in expanding our reach and enhancing our impact.

Thanks to your remarkable generosity and commitment, we have been able to significantly improve the services we offer!

We have expanded our programs, upgraded our equipment, and reached more individuals in need. Your involvement has allowed us to address more needs, provide better care, and make a difference in the lives of those we serve. Your support has not only driven our progress but has also inspired us to aim higher in an effort to continue providing high quality person-centered care!